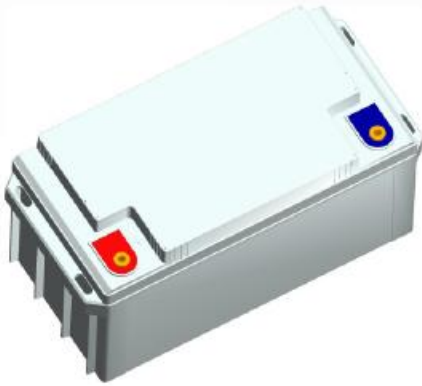
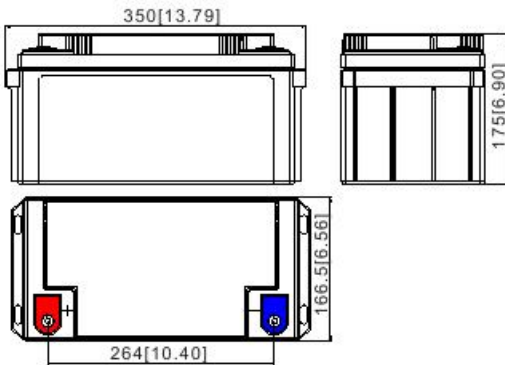


## GP series 6-FM-65B



### ■ Dimensions



### ■ Feature

High strength ABS container  
AGM VRLA sealed technology  
Flat paste plate

### ■ Application

UPS system  
Electric system  
Cable television system

### ■ Specifications

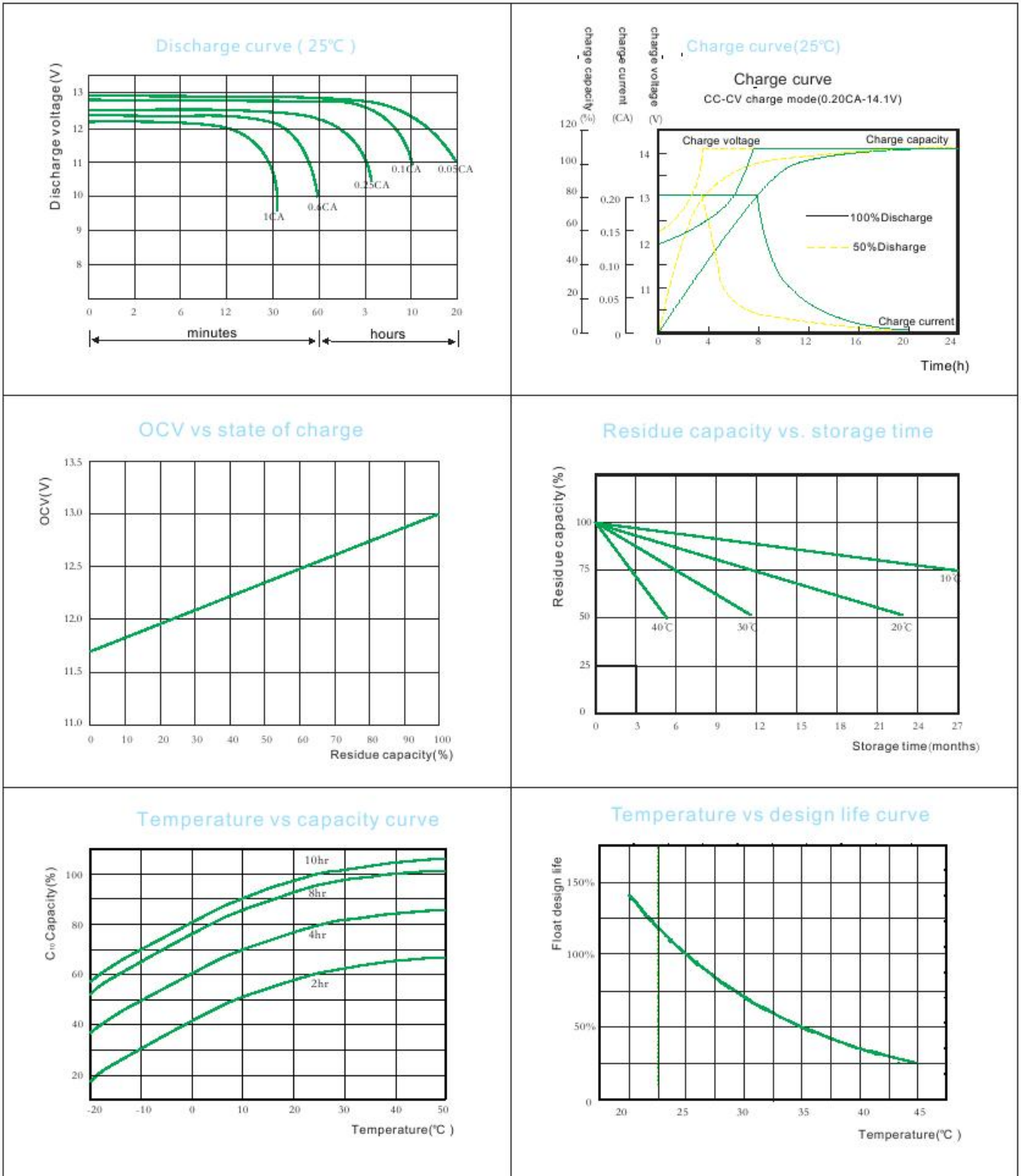
Nominal voltage	12V
Nominal capacity	65Ah(20h rated, 1.75V/cell, 25°C)
Weight	20.5kg
Internal resistance	Approx. 9.0mΩ
Operation temp.	Discharge: -40°C~50°C Charge: -20°C~50°C Storage: -20°C~40°C
Optimum temperature	15°C~25°C
Float charge	2.27V/cell ( 25°C)
Max. charge current	16.25A
Equalization charge	2.35V~2.40V/cell ( 25°C)
Self discharge	Residue capacity above 87% after 90 days storage at 25°C
Terminal	M6
Container material	ABS

Constant current discharge data ( A, 25°C )

End voltage cell	5min	15min	30min	45min	1h	2h	3h	4h	5h	6h	8h	10h	12h	20h	24h
1.60V	202	108	65.7	47.6	38.5	22.1	17.3	13.3	11.9	9.99	7.77	6.39	5.43	3.37	2.82
1.67V	189	104	64.5	47.2	38.2	21.9	17.0	13.2	11.8	9.94	7.67	6.35	5.38	3.34	2.79
1.70V	187	103	63.6	46.9	37.9	21.8	16.9	13.1	11.7	9.90	7.67	6.31	5.32	3.33	2.79
1.75V	172	99.4	63.0	46.5	37.4	21.2	16.7	13.0	11.5	9.87	7.60	6.26	5.32	3.33	2.79
1.80V	154	92.7	60.4	44.6	36.4	21.0	16.6	12.9	11.2	9.68	7.55	6.20	5.28	3.29	2.78
1.83V	147	84.9	59.2	43.2	34.8	20.8	16.0	12.3	10.9	9.34	7.36	5.97	5.06	3.29	2.74
1.85V	138	82.3	55.0	41.4	33.8	20.0	15.6	12.2	10.6	9.14	7.13	5.92	5.03	3.22	2.72

Constant power discharge data ( W/cell, 25°C )

End voltage cell	5min	15min	30min	45min	1h	2h	3h	4h	5h	6h	8h	10h	12h	20h	24h
1.60V	337	190	119	89.3	72.3	41.6	32.8	25.4	22.8	19.2	15.1	12.4	10.5	6.68	5.59
1.67V	324	187	118	88.7	71.9	41.5	32.4	25.4	22.7	19.2	14.9	12.4	10.4	6.65	5.59
1.70V	322	185	118	88.6	71.7	41.3	32.4	25.3	22.5	19.1	14.9	12.2	10.3	6.64	5.58
1.75V	301	183	117	88.4	70.7	41.1	32.1	25.3	22.4	19.1	14.7	12.2	10.3	6.62	5.58
1.80V	281	173	114	86.3	70.5	41.0	32.0	25.2	21.9	19.0	14.7	12.1	10.3	6.62	5.57
1.83V	271	159	113	83.7	67.6	40.5	31.2	24.3	21.4	18.4	14.6	11.8	10.1	6.60	5.53
1.85V	257	155	105	80.4	65.5	39.2	30.4	24.0	20.9	18.0	14.1	11.7	10.0	6.48	5.49



**NARADA POWER SOURCE CO.,LTD.**  
 9F, Building A, No. 50 Zijinghua Road, Hangzhou, China  
 Tel:+86-571-28827013 Fax:+86-571-28828290  
 Website:www.naradabattery.com E-mail:intl@narada.biz

